

# THE VILLAGE AT WINTER PARK RESORT METROPOLITAN DISTRICT NO. 1, 2 & 3

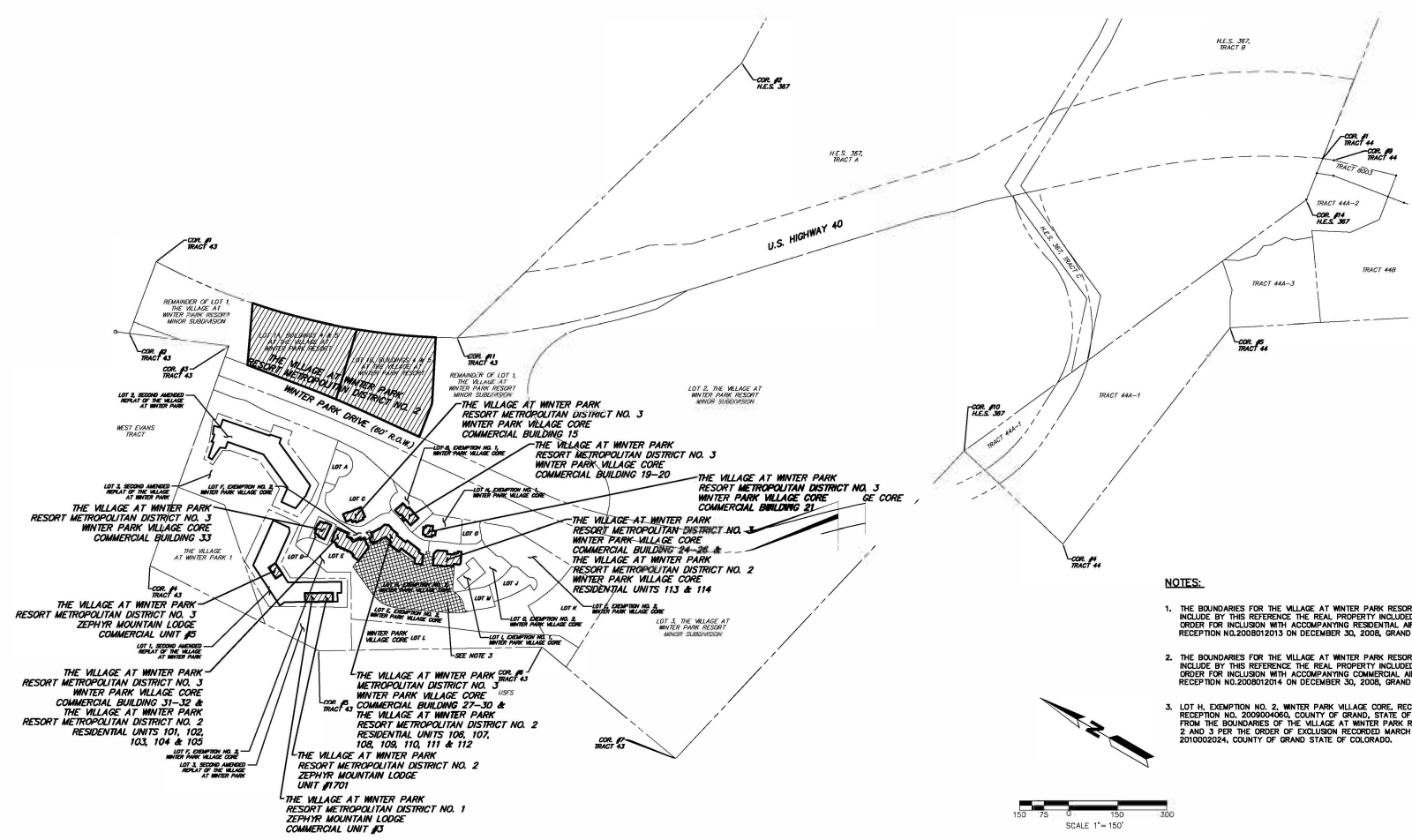
## DISTRICT MAP

LOCATED IN TOWNSHIP 2 SOUTH,  
RANGE 75 WEST OF THE 6TH PRINCIPAL MERIDIAN,  
TOWN OF WINTER PARK, COUNTY OF GRAND,  
STATE OF COLORADO

SHEET 1 OF 1

CAD INFORMATION  
Paper: Space  
Plot: 11/11/11  
Dwg. Name: 20342.C84/1  
Graphic: Map.dwg  
Model Space  
Work: 11/11/11  
Profile View(s)  
Other View:  
12/22/10 Arcat  
11/11/11  
References:  
X  
Project Manager:  
R. N. BOBE  
Drawn By:  
Designed By:  
District  
Location:  
D:\SUBJECT\Winter Park Village Resort\Winter Park District Map\September 2010  
Job Number:  
20342.C84  
Sheet Number:  
1 of 1

DISTRICT MAP



### NOTES:

1. THE BOUNDARIES FOR THE VILLAGE AT WINTER PARK RESORT METROPOLITAN DISTRICT NO. 2 INCLUDE BY THIS REFERENCE THE REAL PROPERTY INCLUDED WITHIN DISTRICT NO. 2, PER THE ORDER FOR INCLUSION WITH ACCOMPANYING RESIDENTIAL AIRSPACE DESCRIPTIONS RECORDED AT RECEPTION NO.2008012013 ON DECEMBER 30, 2008, GRAND COUNTY, COLORADO.
2. THE BOUNDARIES FOR THE VILLAGE AT WINTER PARK RESORT METROPOLITAN DISTRICT NO. 3 INCLUDE BY THIS REFERENCE THE REAL PROPERTY INCLUDED WITHIN DISTRICT NO. 3, PER THE ORDER FOR INCLUSION WITH ACCOMPANYING COMMERCIAL AIRSPACE DESCRIPTIONS RECORDED AT RECEPTION NO.2008012014 ON DECEMBER 30, 2008, GRAND COUNTY, COLORADO.
3. LOT H, EXEMPTION NO. 2, WINTER PARK VILLAGE CORE, RECORDED MAY 6, 2009 UNDER RECEPTION NO. 200904066, COUNTY OF GRAND, STATE OF COLORADO HAS BEEN EXCLUDED FROM THE BOUNDARIES OF THE VILLAGE AT WINTER PARK RESORT METROPOLITAN DISTRICTS NOS. 2 AND 3 PER THE ORDER OF EXCLUSION RECORDED MARCH 15, 2010 UNDER RECEPTION NO. 2010002024, COUNTY OF GRAND STATE OF COLORADO.

DECEMBER 21, 2010

