

WHEN RECORDED RETURN TO:
WHITE BEAR ANKELE TANAKA & WALDRON
2154 East Commons Avenue, Suite 2000
Centennial, CO 80122

The Village at Winter Park Resort Metropolitan District No. 2
(In the Town of Winter Park, County of Grand, Colorado)

SPECIAL DISTRICT PUBLIC DISCLOSURE
Pursuant to § 32-1-104.8 C.R.S.

Name of District:	The Village at Winter Park Resort Metropolitan District No. 2 ("District")
Powers of the District:	All powers authorized in § 32-1-1004, C.R.S., including, but not limited to, mosquito control, traffic and safety controls, street improvements, television relay and translator facilities, transportation, solid waste disposal, security services, and covenant enforcement subject to the limitations contained in the District's Service Plan.
Service Plan:	The District's Service Plan, which can be amended from time to time, includes a description of the District's powers and authority. A copy of the District's Service Plan is available from the Division of Local Government.
	The Village at Winter Park Resort Metropolitan District No. 2 is authorized by Title 32 of the Colorado Revised Statutes to use a number of methods to raise revenues for capital needs and general operations costs. These methods, subject to the limitations imposed by section 20 of Article X of the Colorado Constitution, include issuing debt, levying taxes, and imposing fees and charges. Information concerning directors, management, meetings, elections and current taxes are provided annually in the Notice to Electors described § 32-1-809(1), C.R.S., which can be found at the District office, on the District's web site, on file at the Division of Local Government in the State Department of Local Affairs, or on file at the office of the clerk and recorder of each county in which the special district is located.
District Boundaries:	A map of the District's boundaries is attached hereto as Exhibit A. Please note that the District's boundaries may change from time to time. Please contact the District for the latest information.

EXHIBIT A
District Boundary Map

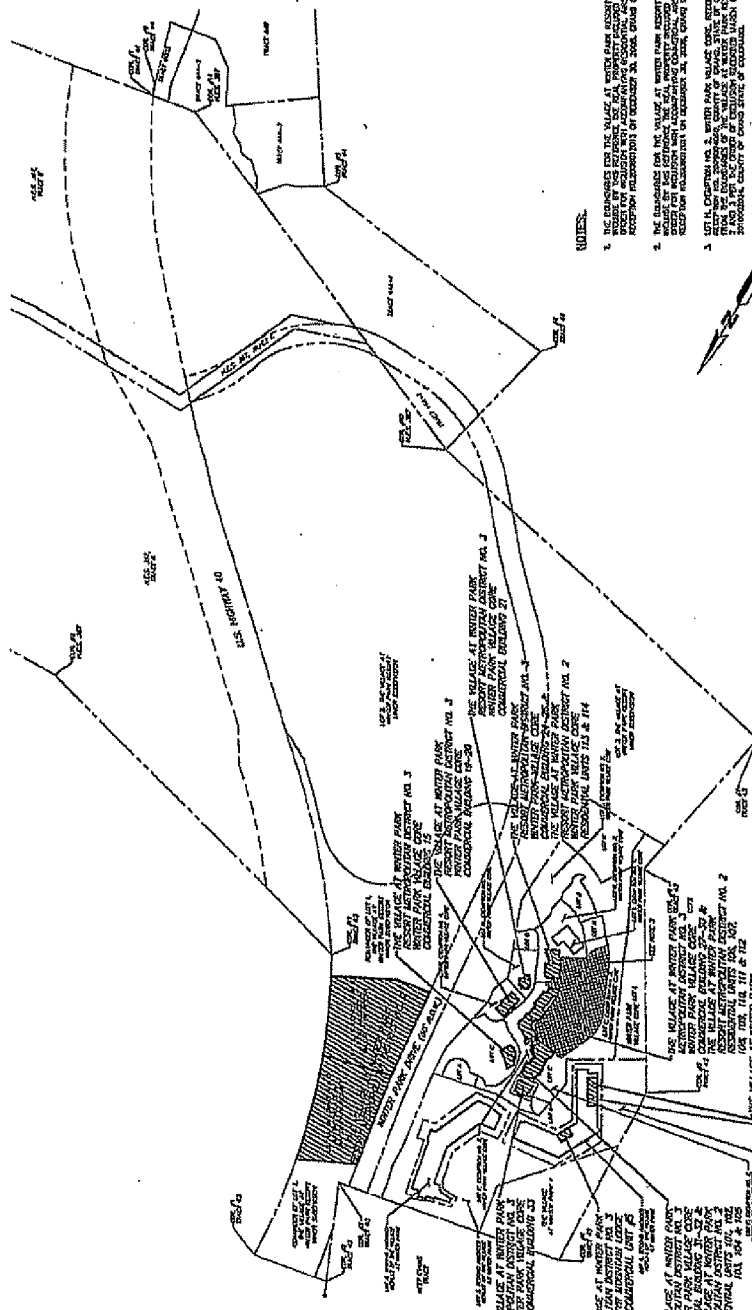
(Lot # 65569)

THE VILLAGE AT WINTER PARK RESORT METROPOLITAN DISTRICT NO. 1, 2 & 3
DISTRICT MAP

LOCATED IN TOWNSHIP 2 SOUTH,
 RANGE 75 WEST OF THE 6TH PRINCIPAL MERIDIAN,
 TOWN OF WINTER PARK, COUNTY OF GRAND,
 STATE OF COLORADO

SHEET OF 1

CAD PROVISIONAL
 Date: 12/18/2014
 Project: District Map
 Project Manager: Sara L. Rosene
 Location: Grand County, Colorado
 District: Metropolitan District No. 1, 2 & 3
 Sheet: 1 of 1



- NOTES:**
1. THE DIMENSIONS FOR THE VILLAGE AT WINTER PARK RESORT METROPOLITAN DISTRICT NO. 1, 2 & 3 ARE BASED ON THE RECORD DRAWING FOR THE DISTRICT MAP. THE DIMENSIONS FOR THE VILLAGE AT WINTER PARK RESORT METROPOLITAN DISTRICT NO. 1, 2 & 3 ARE BASED ON THE RECORD DRAWING FOR THE DISTRICT MAP. THE DIMENSIONS FOR THE VILLAGE AT WINTER PARK RESORT METROPOLITAN DISTRICT NO. 1, 2 & 3 ARE BASED ON THE RECORD DRAWING FOR THE DISTRICT MAP.
 2. THE DIMENSIONS FOR THE VILLAGE AT WINTER PARK RESORT METROPOLITAN DISTRICT NO. 1, 2 & 3 ARE BASED ON THE RECORD DRAWING FOR THE DISTRICT MAP. THE DIMENSIONS FOR THE VILLAGE AT WINTER PARK RESORT METROPOLITAN DISTRICT NO. 1, 2 & 3 ARE BASED ON THE RECORD DRAWING FOR THE DISTRICT MAP. THE DIMENSIONS FOR THE VILLAGE AT WINTER PARK RESORT METROPOLITAN DISTRICT NO. 1, 2 & 3 ARE BASED ON THE RECORD DRAWING FOR THE DISTRICT MAP.
 3. LOT 10, DISTRICT NO. 3, WINTER PARK RESORT METROPOLITAN DISTRICT NO. 1, 2 & 3, IS A 100% INTEREST IN THE VILLAGE AT WINTER PARK RESORT METROPOLITAN DISTRICT NO. 1, 2 & 3. THE DIMENSIONS FOR LOT 10, DISTRICT NO. 3, WINTER PARK RESORT METROPOLITAN DISTRICT NO. 1, 2 & 3, ARE BASED ON THE RECORD DRAWING FOR THE DISTRICT MAP.

DATE: 12/18/2014
 TIME: 10:00 AM
 DRAWN BY: SARA L. ROSENE
 CHECKED BY: SARA L. ROSENE
 PROJECT: DISTRICT MAP