

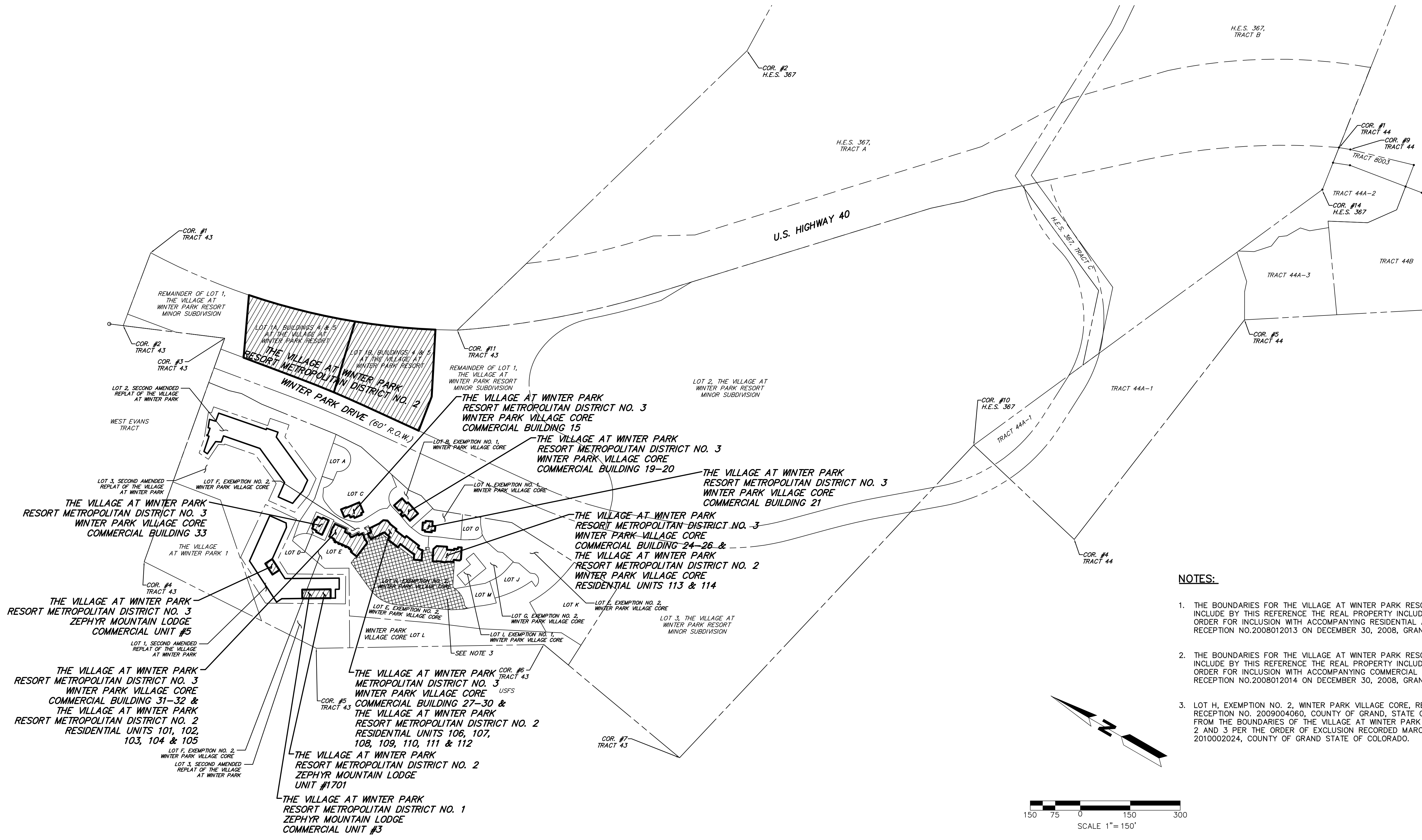
THE VILLAGE AT WINTER PARK RESORT METROPOLITAN DISTRICT NO. 1, 2 & 3

DISTRICT MAP

LOCATED IN TOWNSHIP 2 SOUTH,
RANGE 75 WEST OF THE 6TH PRINCIPAL MERIDIAN,
TOWN OF WINTER PARK, COUNTY OF GRAND,
STATE OF COLORADO

SHEET 1 OF 1

Location: G:\SURVEY\Winter Park Village Resort\Winter Park District Map\December 2010
 Project Manager: R. NOBBE
 Drawn By: AREHART
 Job Number: 20342.C.84
 Sheet Number: 1 OF 1
 DISTRICT MAP
 X References:
 Plot Date: 12/22/10
 Tab Name: Sht-1
 Model Space
 Paper Space
 PLAN
 Other View:
 Dwg. Name: District_Map.dwg



NOTES:

1. THE BOUNDARIES FOR THE VILLAGE AT WINTER PARK RESORT METROPOLITAN DISTRICT NO. 2 INCLUDE BY THIS REFERENCE THE REAL PROPERTY INCLUDED WITHIN DISTRICT NO. 2, PER THE ORDER FOR INCLUSION WITH ACCOMPANYING RESIDENTIAL AIRSPACE DESCRIPTIONS RECORDED AT RECEPTION NO.2008012013 ON DECEMBER 30, 2008, GRAND COUNTY, COLORADO.
2. THE BOUNDARIES FOR THE VILLAGE AT WINTER PARK RESORT METROPOLITAN DISTRICT NO. 3 INCLUDE BY THIS REFERENCE THE REAL PROPERTY INCLUDED WITHIN DISTRICT NO. 3, PER THE ORDER FOR INCLUSION WITH ACCOMPANYING COMMERCIAL AIRSPACE DESCRIPTIONS RECORDED AT RECEPTION NO.2008012014 ON DECEMBER 30, 2008, GRAND COUNTY, COLORADO.
3. LOT H, EXEMPTION NO. 2, WINTER PARK VILLAGE CORE, RECORDED MAY 6, 2009 UNDER RECEPTION NO. 2009004060, COUNTY OF GRAND, STATE OF COLORADO HAS BEEN EXCLUDED FROM THE BOUNDARIES OF THE VILLAGE AT WINTER PARK RESORT METROPOLITAN DISTRICTS NOS. 2 AND 3 PER THE ORDER OF EXCLUSION RECORDED MARCH 15, 2010 UNDER RECEPTION NO. 2010002024, COUNTY OF GRAND STATE OF COLORADO.

DECEMBER 21, 2010

MARTIN / MARTIN
 CONSULTING ENGINEERS
 13499 WEST COLFAX AVE.
 P.O. BOX 151900
 LAKEWOOD, CO 80215
 303.431.6100
 FAX 303.431.4028